

**ACCADEMIA DI AGRICOLTURA DI TORINO
ADUNANZA PUBBLICA**

VIA ANDREA DORIA 10 - TORINO - 011.812.74.70

MERCOLEDI' 3 OTTOBRE ORE 16,00

ROBERTO JONA

LA FILOSOFIA DELL'ACQUA

SPUNTI DA UNA VISITA IN ISRAELE

**INTERVENTI PROGRAMMATI: MARCO DEVECCHI, ENRICO BORGOGNO MONDINO,
ILARIA MIGNANI, FRANCESCA MAZZINO**



L'architettura del paesaggio in Israele

Francesca Mazzino

Dipartimento di Architettura e Design, Università di Genova



The Kingdoms of Israel and Judah

1 Kings 12–15; 2 Chronicles 10–15

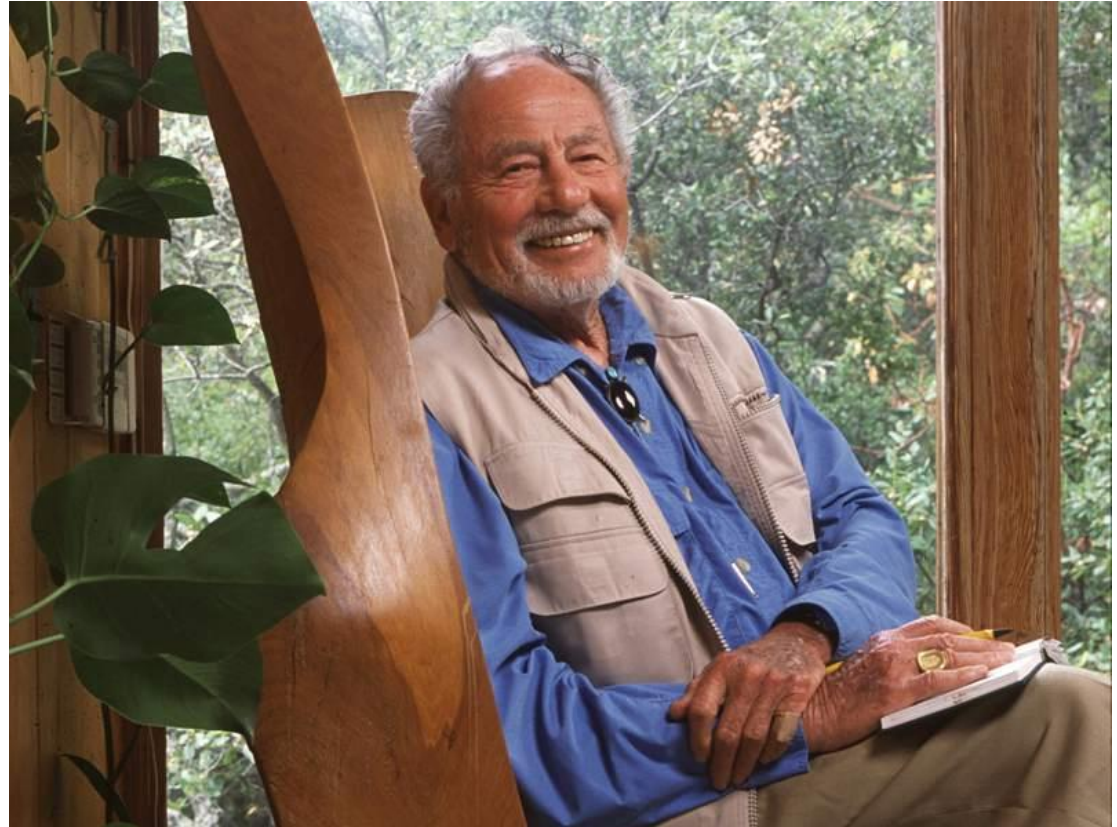
After Solomon's death, Israel divided into two kingdoms: Judah in the south with Jerusalem as its capital; and Israel in the north with its capital at first at Shechem, then Tirzah, and finally at Samaria. King Jeroboam built his own temples at Bethel and at Dan. Only after prolonged combat was the border established with Benjamin as part of Judah.

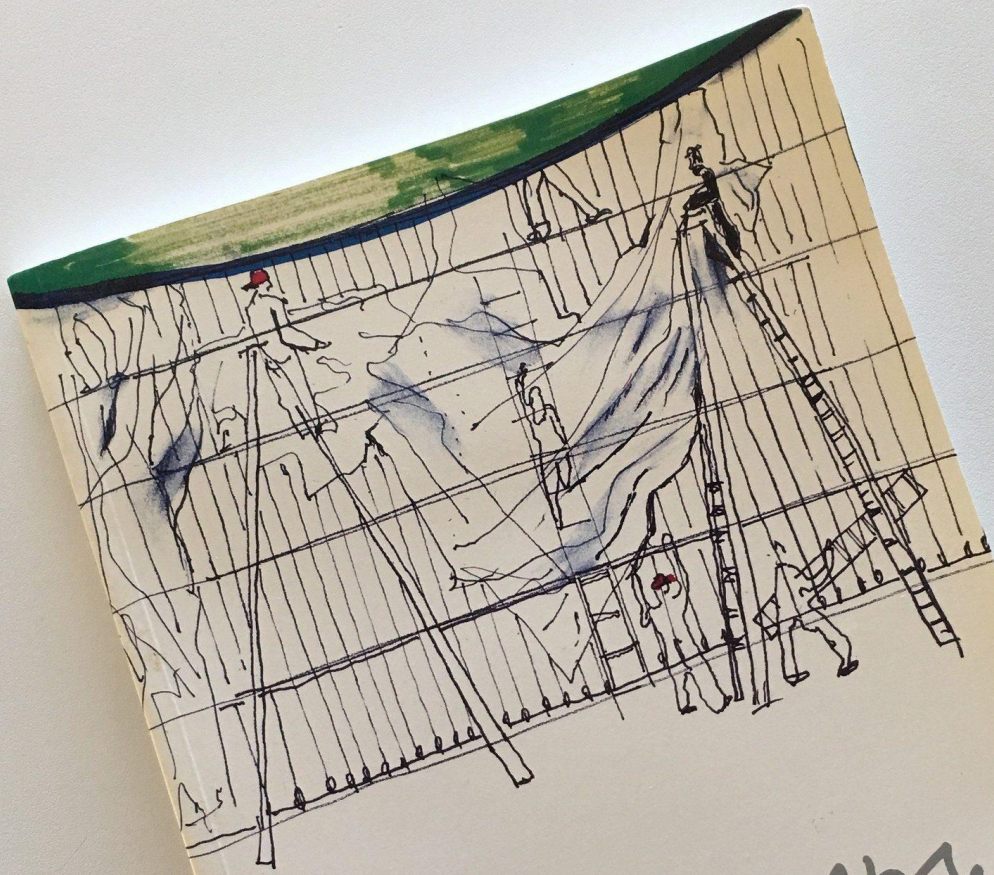
Shortly after the division Pharaoh Shishak launched an invasion of Israel and Judah. King Rehoboam responded by fortifying a number of cities in Judah.

The map shows the border between the kingdoms, the route of Shishak's invasion (according to the list of conquered cities recorded in the temple at Karnak), and the cities fortified by Rehoboam.



Lawrence
Halprin

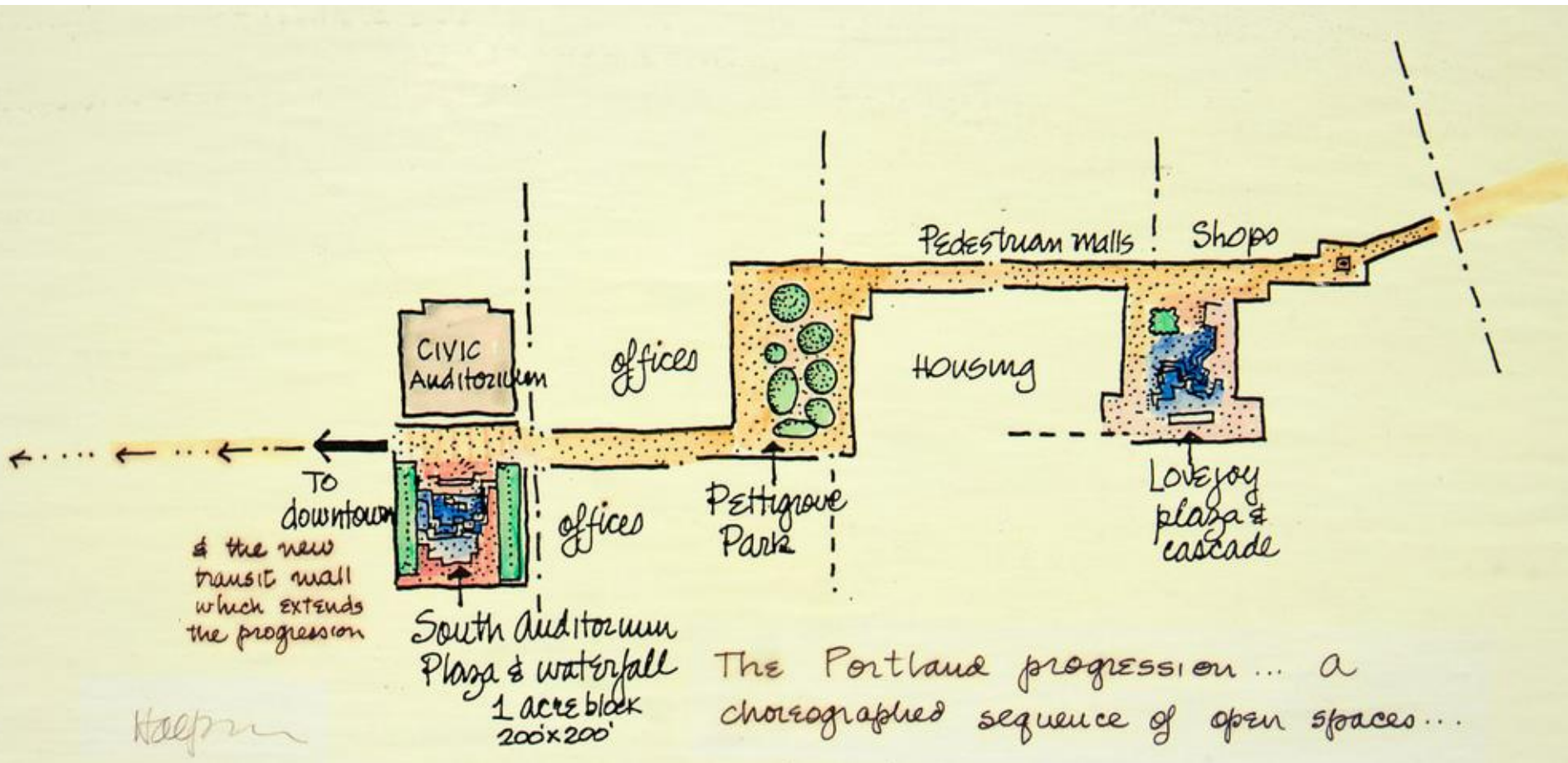




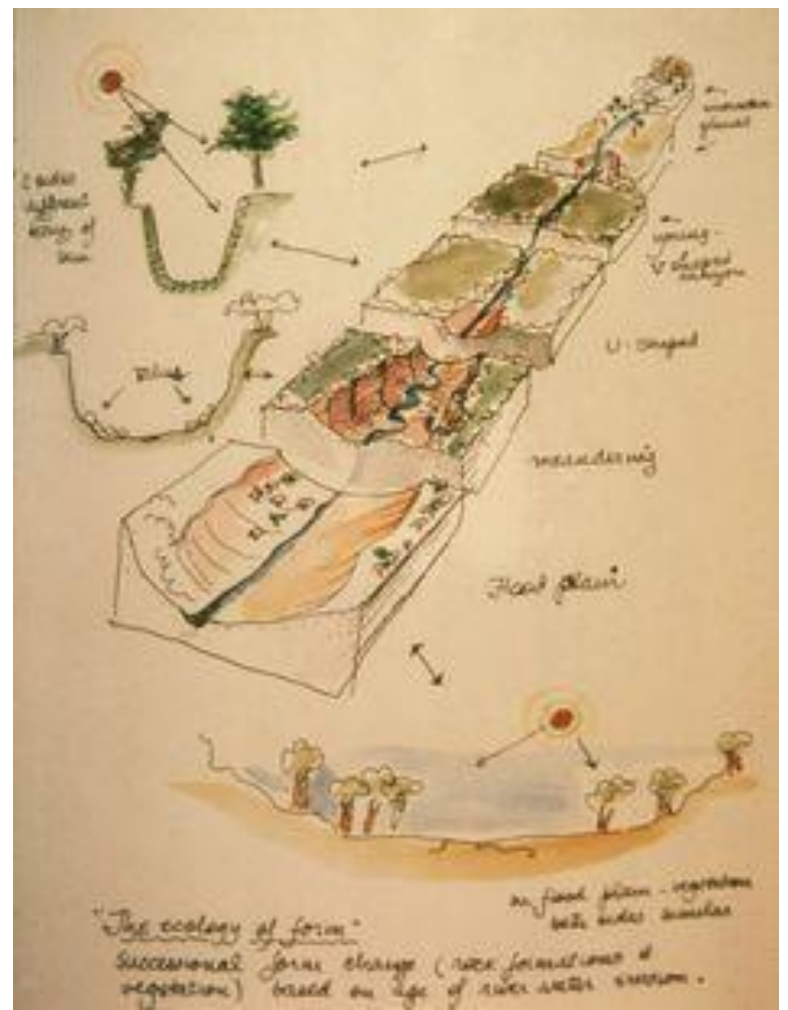
Lawrence Halprin

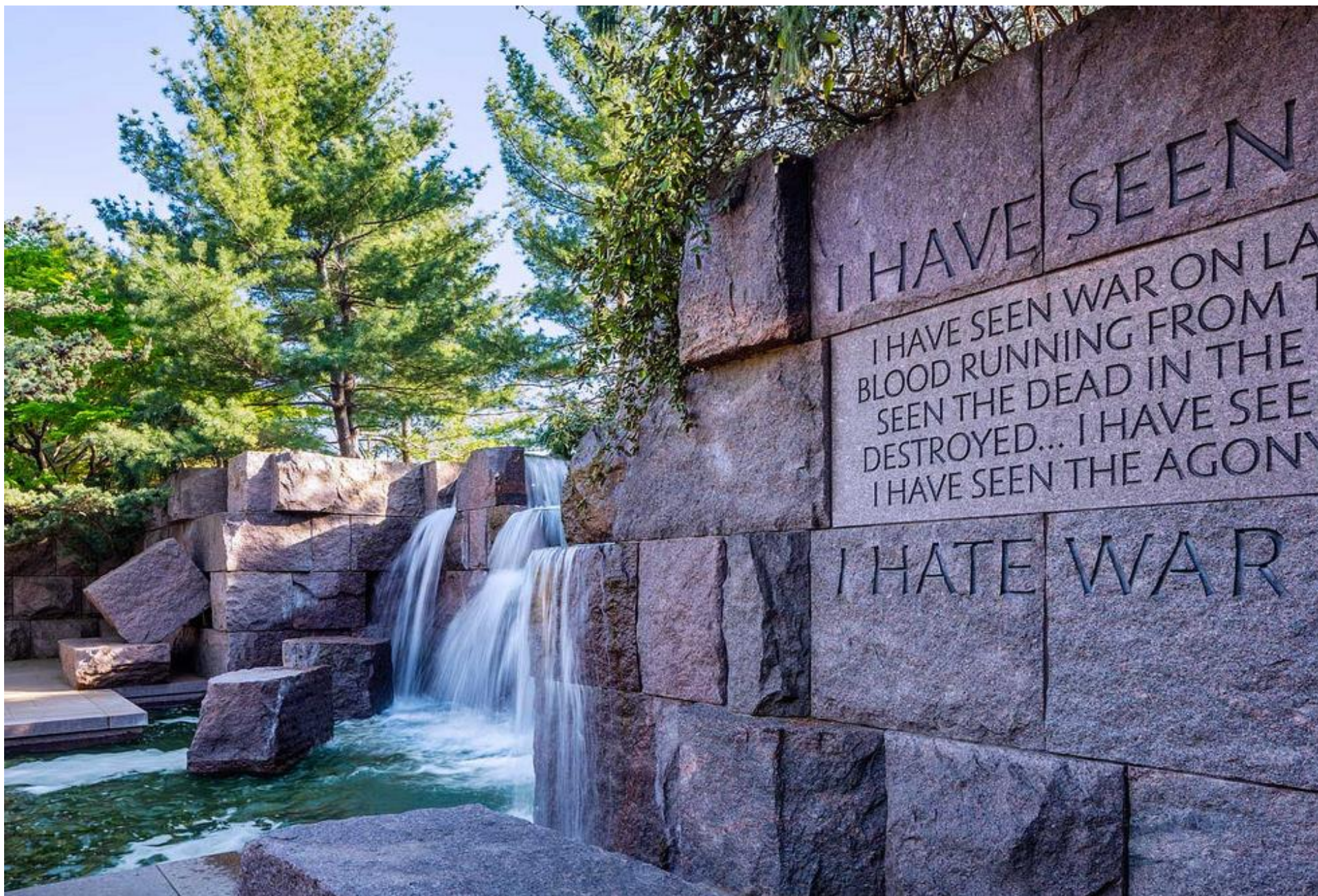
Changing Places

San Francisco Museum of Modern Art



Sistema di spazi aperti, Portland , Oregon





I HAVE SEEN

I HAVE SEEN WAR ON LA
BLOOD RUNNING FROM T
SEEN THE DEAD IN THE
DESTROYED... I HAVE SEE
I HAVE SEEN THE AGONY

I HATE WAR





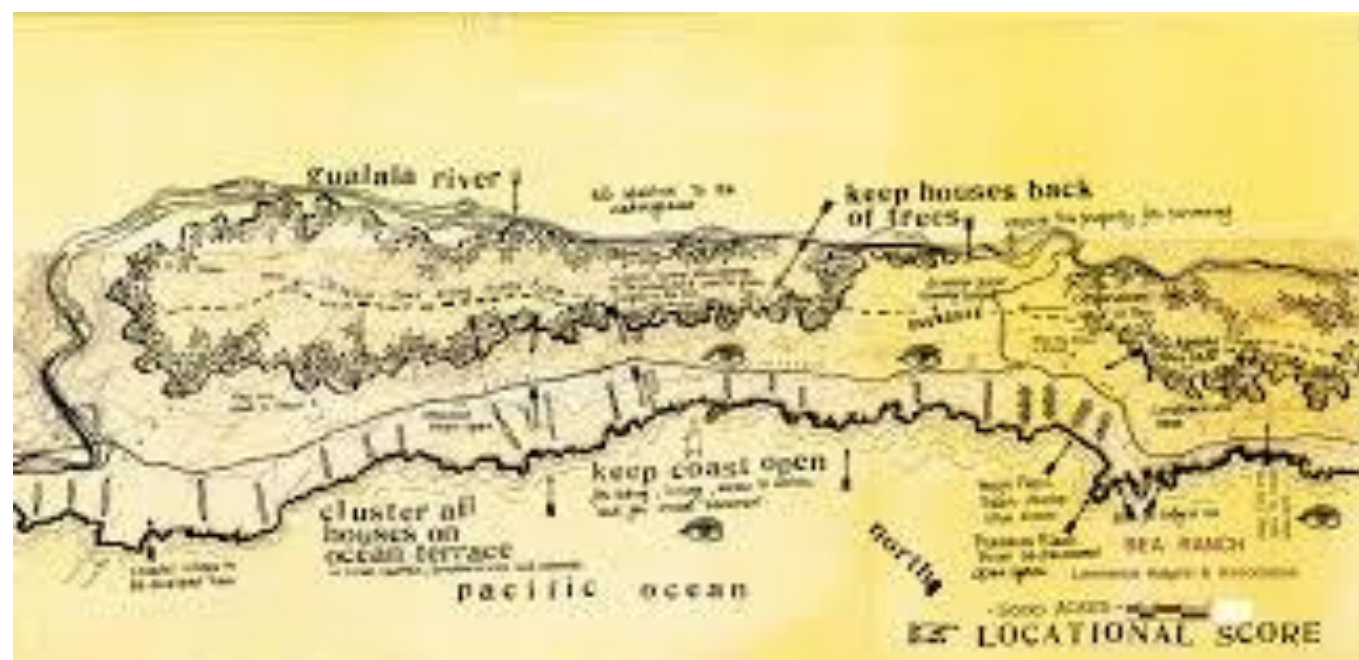
Sea Ranch, Gualala, California

The Halprin Workshops,
1966–1971

Graham Architectural
Archives ,
University of
Pennsylvania

Feb 23–April 18, 2015









Shlomo
Aronson



National Outline Plan for Afforestation





BEIT SHALOM PARK JERUSALEM

HERTZELIYA PARK (BASA) – 70 HECTARE STORMWATER PARK



GEOLOGICALLY A LOW AND FLAT AREAS WITH A BAD HISTORY OF FLOODINGS

CREDIT: SHLOMO AHARONSON ARCHITECTS



בריכות החורף הינן שטחי הצפה
האדמה הינה בוצית !
הכניסה למים אסורה !
הירידה משבילי ההליכה אסורה !

Caution- Flood Area !
Caution- Mud on Road !
Do Not Enter the Water !
Stay on Trail !

برك الشتاء هي مناطق فيضانات وأرضها طينية
ممنوع الدخول إلى الماء!
النزول من مسارات المشي ممنوع!









פארק הרצליה



טבלן גמדי
TACHYBAPTUS
RUFICOLLIS

שהיה בארץ:
יש אוכלוסיה יציבה ויש חורפים.
מזון: ראשנים, רכיכות, סרטנים
קטנים וחרקי מים.
בית גדול ומקום קינון: בסבך
צומח בבריכות של מים מתוקים.



ברכיה
ANAS
PLATYRHYNCHOS

שהיה בארץ:
יש יציבות ויש חורפות.
מזון: תסנין של מי הברכה, חומר
אורגני ויצורים קטנים.
בית גדול ומקום קינון: חיה בבריכות.
מקננת בגדות.



פרית צפונית
ANAS CLYPEATA

שהיה בארץ: חורפת.
מזון: תסנין של מי הברכה -
חומר אורגני ויצורים קטנים.
בית גדול ומקום קינון: ביצות מים
מתוקים עשירות בצומח.

NORTH-WEST TEL AVIV NEIGHBORHOOD AND COASTAL PARK



BUILT FORM LAYOUT

STUDIO URBANOF Leor Lovinger





NORTH-WEST TEL AVIV NEIGHBORHOOD AND COASTAL PARK



STORMWATER DIAGRAM

NORTH-WEST TEL AVIV NEIGHBORHOOD AND COASTAL PARK

הפארק הלינארי | תכנית



THE LINEAR PARK AND THE COASTAL PARK INTERSECT AT THE FORUM – A MULTILEVEL STRUCTURE THAT CONNECTS TO THE CITY VIA A SQUARE, AND SERVES AS A GATEWAY TO THE MAIN PARK PATH





BIO ACTIVE WALL , 2011, ECOCONCRETE





Grazie per
l'attenzione

